

**T100 / T200 Series**

Transparent Liquid Level Gage

**FT25 "Free Turn"**

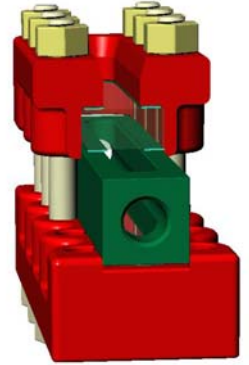
Double Union Offset Pattern Gage Valve

Drawing Rev: A

Drawing Date: 08/10/15

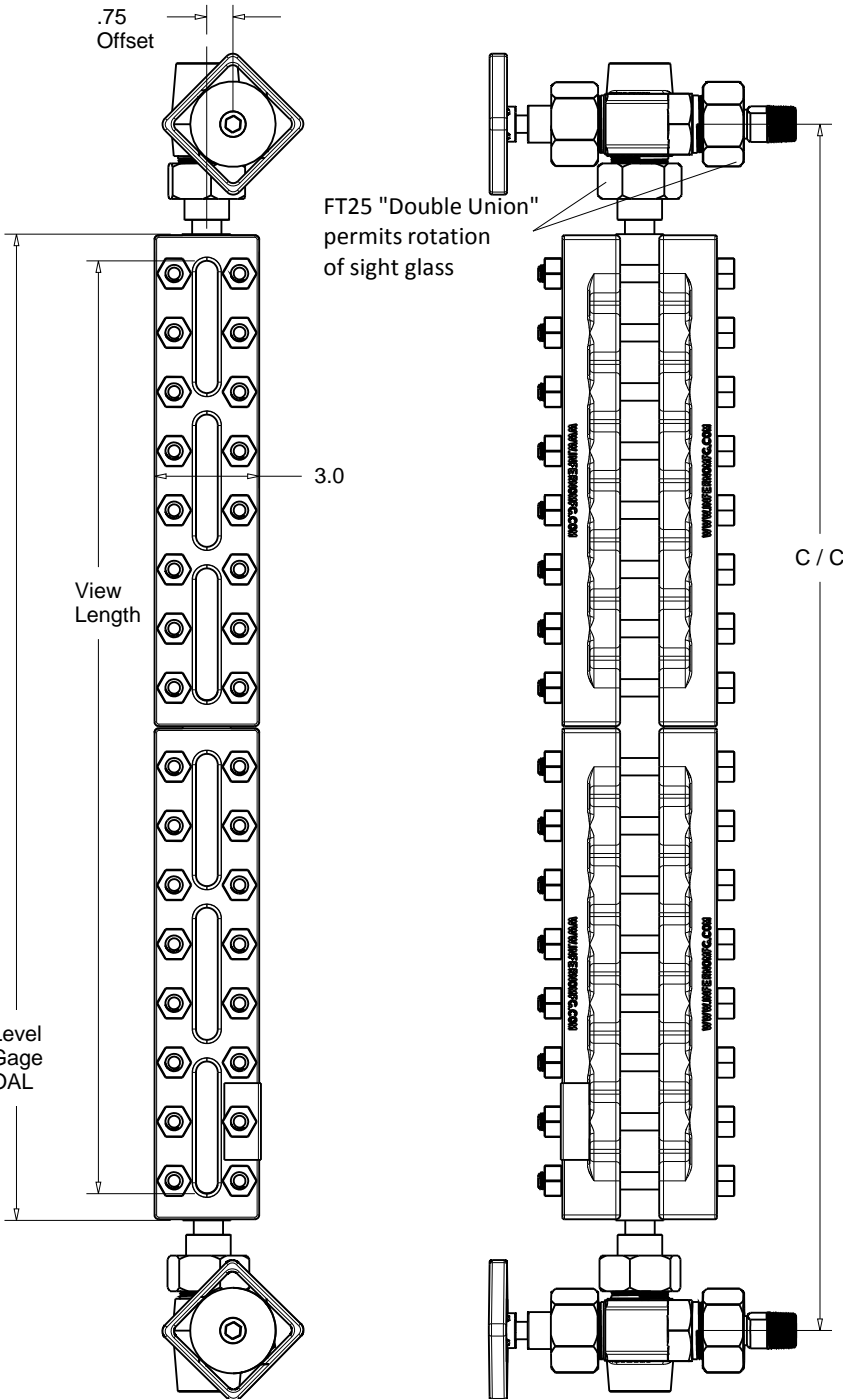
Revision Date: 02/20/19

*Sight Glass Valve will Not Seize*  
 Exclusive Design- "Free Turn"  
 Isolated Working Threads  
 Not Vulnerable to Process Corrosion  
 Patent 6,991,216 (January 31, 2006)

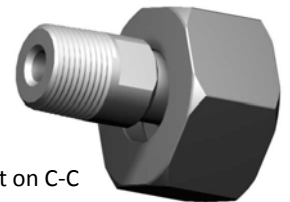


**MATERIALS**

All steel construction  
 Wetted per NACE  
 Tempered borosilicate glass  
 Flexible graphite seal w SS insert  
 Corrosion protection:  
 zinc plated body and bolting,  
 epoxy valve finish, powder coat cover



Easy Fit Up Union  
 Conventional metal-to-metal seal  
 enhanced with size 2-116 O-ring  
 (nut omitted for clarity)  
 Spherical union option



Floating Tailpiece  
 $\pm 1/4$ " adjustment on C-C

© 2015 Inferno Mfg. Corp. all rights reserved  
[www.infernomfg.com](http://www.infernomfg.com)

This drawing is the property of Inferno Mfg. Corp.  
 and may not be reproduced without permission.