

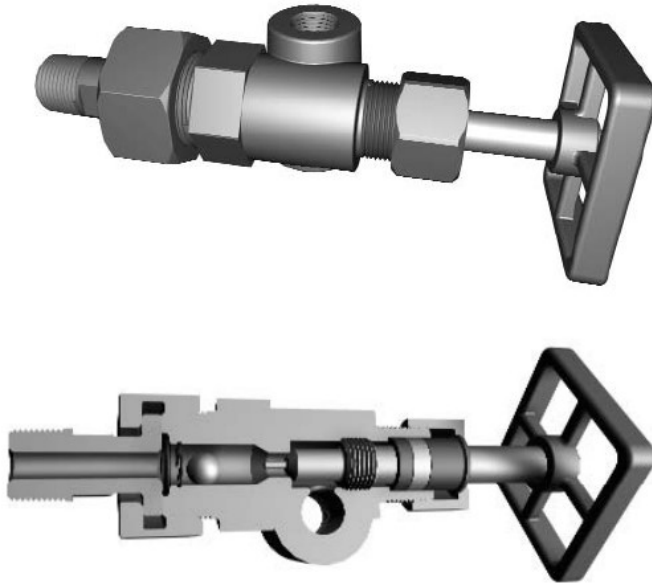
# MODEL 15A

## SIGHT GLASS GAGE VALVE

valves for  
flat glass  
gages

Bulletin 15A  
Issued 3/07  
Replaces 10/04

3000 PSIG @ 100°F



### STANDARD INFERNO BENEFITS

- Secondary Seal— O-Ring in union overcomes effects of minor piping misalignment
- Hex area of valve body allows space for back-up wrench when making up union— more secure grip for wrench—tighter and safer installation
- “Floating Union” vessel connectors allow  $\pm 1/4$ ” center-to-center adjustment—**more “float” than any other brand**
- Name plate includes instructions for correct operation of safety ball checks
- Corrosion resistant SS trim (ball check, packing washer, stem)
- TFE Stem Packing standard—low friction turning

### PRESSURE/TEMPERATURE RANGES

	-300°F	-50°F	-20°F	100°F	200°F	300°F	400°F	500°F	600°F	750°F
	-184°C	-46°C	-29°C	38°C	93°C	149°C	204°C	260°C	316°C	399°C
Forged Steel			3000	3000	2925	2850	2800	2625	2350	1950
Heat Treated Steel		3000	3000	3000	2925	2850	2800	2625	2350	1950
Stainless Steel	3000	3000	3000	3000	2925	2850	2800	2625	2350	1950

© 2007 Inferno Mfg. Corp. All rights reserved.

OFFSET PATTERN		INTEGRAL BONNET		INTEGRAL SEAT		OPTIONAL	
						STANDARD	
VESSEL CONNECTION							
Union	3/8" NPTM					X	
	1/2" NPTM					X	
	<b>3/4" NPTM</b>					<b>X</b>	
	1" NPTM (Non-Float)					X	
Spherical Union	1/2" NPTM					X	
	3/4" NPTM					X	
	1" NPTM					X	
Socket Weld	1/2" S/W Male					X	
	3/4" S/W Male					X	
	1" S/W Male (Non-Float)					X	
Solid Shank	1/2" NPTM					X	
	3/4" NPTM					X	
	1" NPTM					X	
Flanged						X	
UNION VESSEL SEAL							
	<b>Viton™</b>					<b>X</b>	
	Buna (Nitrile)					X	
	Aflas™ (to 400°F Steam)					X	
	Hi-Temp (to 525°F Steam)					X	
	TFE					X	
	Omitted					X	
GAGE CONNECTION							
Rigid	<b>1/2" NPTF</b>					<b>X</b>	
	3/4" NPTF					X	
Socket Weld	1/2" S/W F					X	
	3/4" S/W F					X	
Flanged						X	
VENT / DRAIN CONNECTION							
Rigid	<b>1/2" NPTF</b>					<b>X</b>	
	3/4" NPTF					X	
STEM PACKING							
	<b>TFE (up to 500°F)</b>					<b>X</b>	
	GRAFOIL™					X	
TRIM							
	<b>T410 SS</b>					<b>X</b>	
	T316 SS					X	
BALL CHECK SHUT-OFF							
	<b>Horizontal Lower &amp; Upper</b>					<b>X</b>	
	Omitted (acceptable for ASME service)					X	
	Vacuum-Horizontal Lower & Upper					X	
	<b>Handwheel with Standard Pitch Thread</b>					<b>X</b>	
	Lever with Quick Closing Thread					X	
SEAT DIAMETER							
	<b>3/8" Ø</b>					<b>X</b>	
	1/2" Ø					X	

# INFERNO

MANUFACTURING CORPORATION

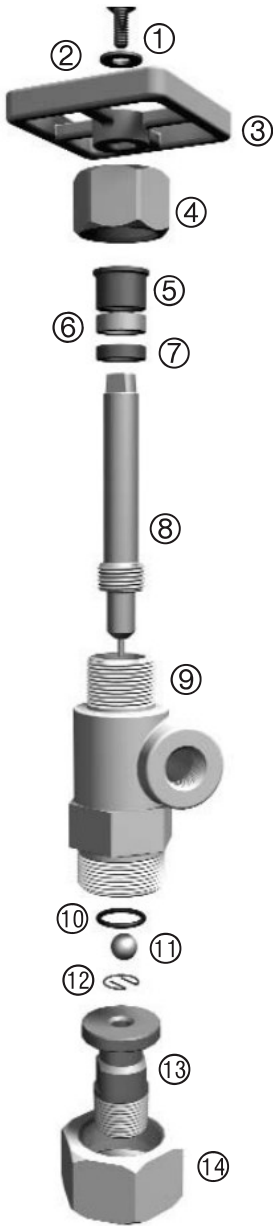
115 RICOU ST • SHREVEPORT, LA 71107-6933

318-221-8454 • FAX 318-222-4106 • www.infernomfg.com

PAGE  
15A1

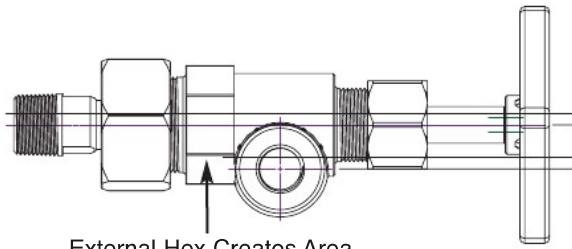
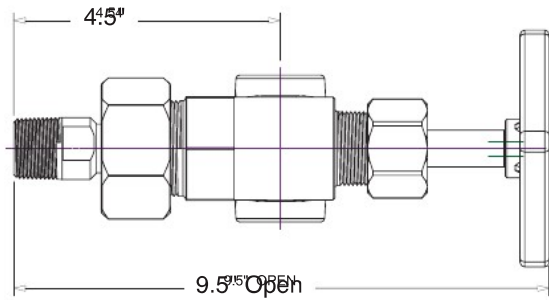
# MODEL 15A PARTS LIST

WEIGHT: 11.1 lbs (5.0 kg) per set

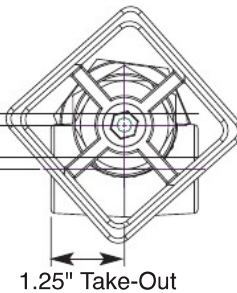


ITEM	DESCRIPTION	MATERIAL—Standard	MATERIAL—Optional
1	Screw	Steel	SS
2	Washer	Steel	SS
3	Hand Wheel	Ductile Iron	
4	Packing Nut	Steel	T316 SS
5	Packing Gland	Steel	T316 SS
6	Packing	TFE	Grafoil™
7	Stem Washer	T410 SS (CR13)	T316 SS
8	Stem	T410 SS (CR13)	T316 SS
9	Body	Forged Steel, A-105	T316 SS
10	O-Ring, Size 2-116	Viton™	various
11	Ball	T304 SS	T316 SS
12	Snap Ring	SS	T316 SS
13	Floating Shank	Forged Steel, A-105	T316 SS
14	Union Nut	Forged Steel	T316 SS

Steel valves require optional T304 or T316 S.S. stem & washer to conform to NACE MR-01-75



External Hex Creates Area for Back-Up Wrench



## STANDARD

### O-RING SEAL

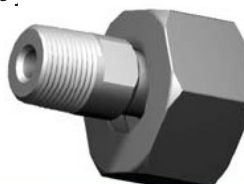


Union Nut omitted for clarity

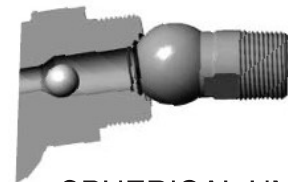
Unique Design— Secondary O-Ring Seal Improves Sealing  
 No more paper gaskets! **Replacement Ring size: Parker 2-116**  
*Conventional metal to metal union without O-Ring or gask designed with one flat face and one beveled face. Tighteni nut causes the two surfaces to c-r-u-s-h tog. However whe misalignment is present, too much work is diverted into bendir various piping elements and not enough force is available to the two faces togeth. Without an additional seal a leaky joint result. A bevel & flat face geometry is still used in the Inferno u. but now an O-Ring is present to finish the .*

### FLOATING SHANK

Vessel Connector “floats” off center by 1/8” in all directions. Combined float in upper and lower valves allows for up to ±1/4” variation in vessel centers.



## OPTIONAL



### SPHERICAL UNION

Provides ± 8° movement to compensate for angular misalignment. Also provides for center-to-center variation when used with elbow fittings—or when used with a “close hook-up” gage. Matching spherical surfaces can be made up repeatedly w/o leakage.