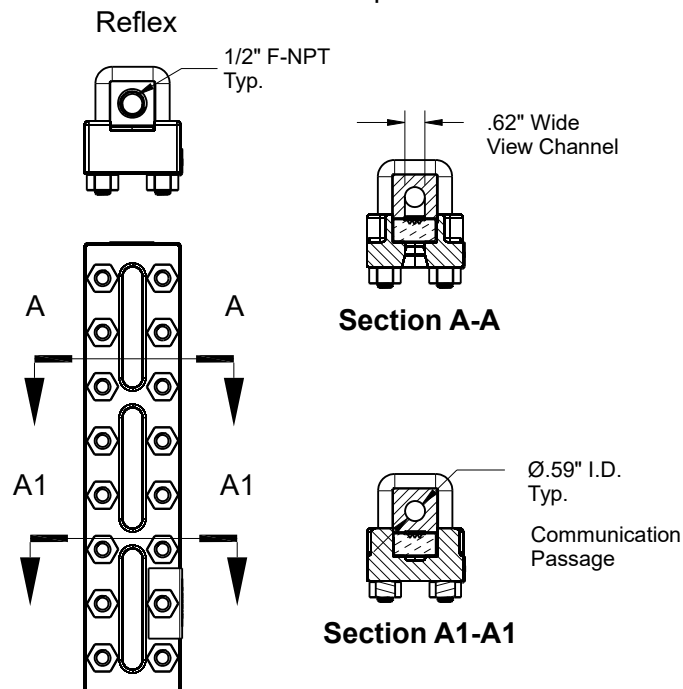
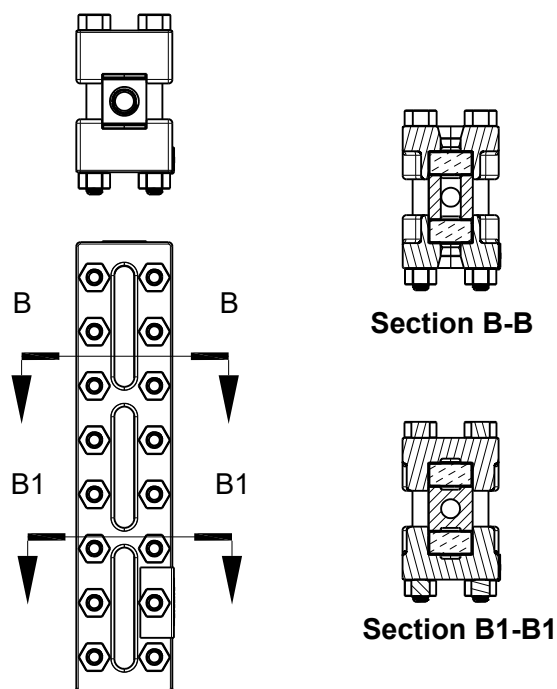


# STANDARD CHAMBER

Reflex: R100  
Transparent: T100/T200

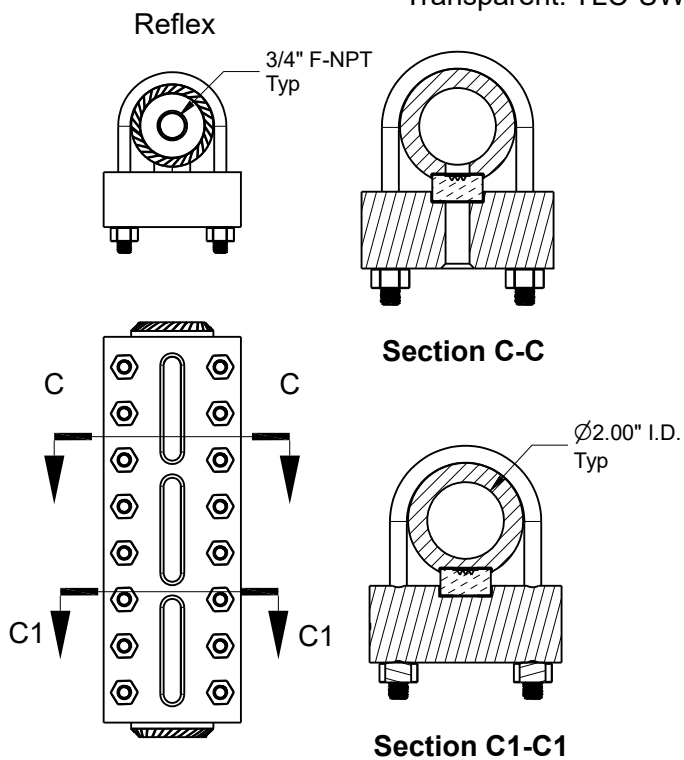


Transparent

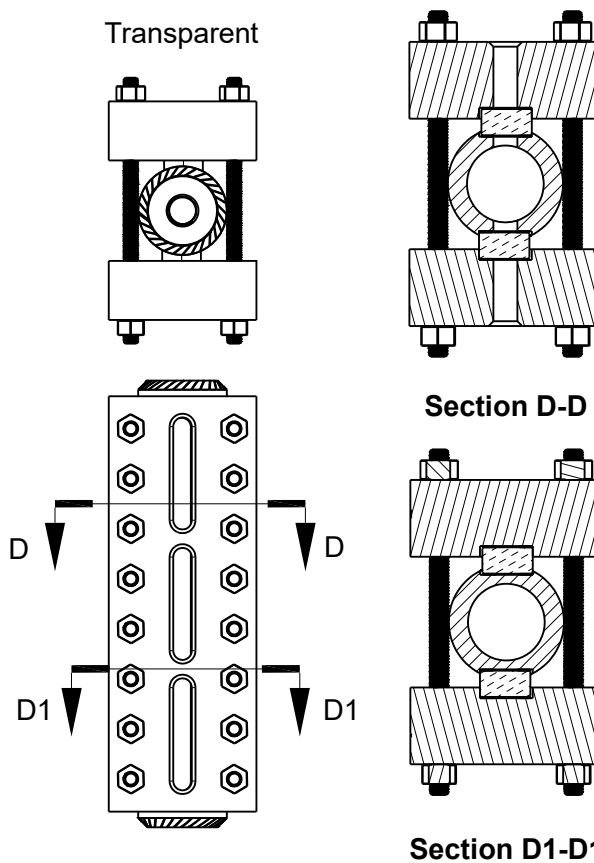


# LARGE CHAMBER

Reflex: RLC-UW  
Transparent: TLC-UW



Transparent



Large Chamber used for boiling hydrocarbons to stabilize view and allow accurate level reading

Reference Weights:

R100: 1.4 lb/in

RLC-UW: 3.7 lb/in

T100: 2.3 lb/in

TLC-UW: 6.4 lb/in

**Inferno Manufacturing Corporation**  
115 Ricou St. Shreveport, LA USA 71107  
T (318) 221-8454 F (318) 222-4106

<http://www.infernomfg.com/>

[inferno@infernomfg.com](mailto:inferno@infernomfg.com)

Standard vs Large Chamber Cross Section

Drawing No: A202064

Apprvd Date: 6/24/20

Drawing Date: 6/23/2020

Revision: A

Drawn by: TB

Rev Date: 10/15/2021

Approved by: AO

© 2020 Inferno Mfg Corp