

Tubular Glass Type Level Gage - Choice of Isolation Valves

Tubular Glass Non-armored

- * Clear or Redline
- * 5/8" O.D. x 7/16" I.D., or
- * 5/8" O.D. x 1/4" I.D. "Extra Heavy Wall"
- * Accessories:
 - Expanded Metal Guard Protector w. SS Hose Clamps
 - SS Guard Rods
 - Strongback for extended piping leg
- * Offset Pattern valve body with 1/2" NPT vent / drain ports allow "straight through" access for cleaning brush. No glass disassembly required.

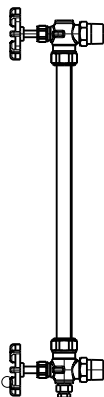
Valve Model
Material

20-250-03
Brass

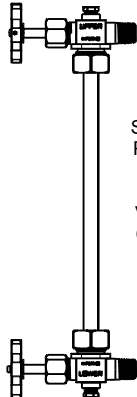
12T
CS or SS

15T
CS

FT-TUB
CS



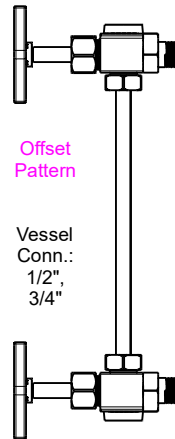
LP-100



LP-101

Straight
Pattern

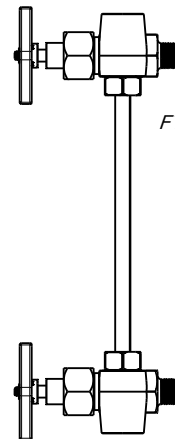
Vessel
Conn.:
1/2"



LP-102

Offset
Pattern

Vessel
Conn.:
1/2",
3/4"

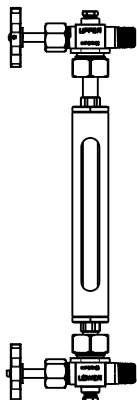


LP-103

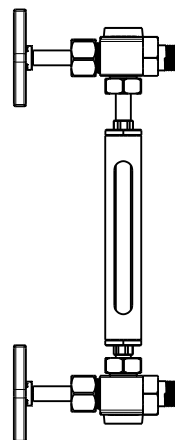
*FT "Free Turn"
Patent
6,991,216*

Tubular Glass Armored Model TE

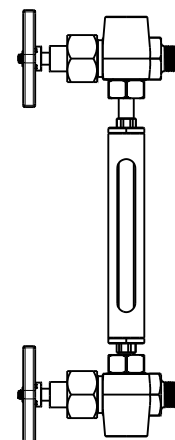
- * Clear (Redline option)
- * T316 SS wetted, T304 SS non-wetted
- * 5/8" diameter smooth end fittings - fits 5/8" stuffingbox
- * Armor: Slotted both front and back for see-thru visibility
- * O-Ring Seals: Size -208, Viton (400° F max)
- * Optional Lexan guard
- * CRN 0F19193.5



LP-201



LP-202

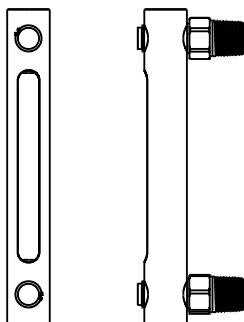


LP-203

Armored Tubular Glass "Close Hook-Up" Clean Service Only Model ATS

- * T316 SS wetted, T304 SS non-wetted
- * Redline glass tube for clear liquids
- * 1/2" MNPT process connection
- * Can be fitted with model 12T-CS or 12T-SS valves
- * Recommended for fuel gas, clean water, clean solvent, etc... NOT for general oilfield
- * Optional Lexan guard
- * CRN 0F19193.5

Direct Mount



LP-321

With Isolation Valves
Special adapter required

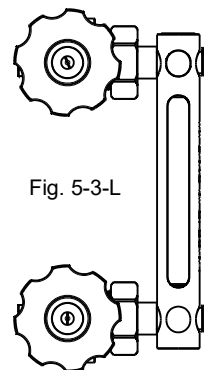


Fig. 5-3-L

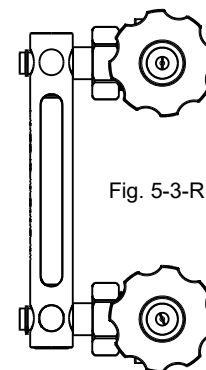


Fig. 5-3-R

LP-322

Reference Documents

[Hail Guard - Expanded Metal](#)

[Model TE](#)

[Model ATS](#)

[FT "Free Turn" Advantages](#)



Inferno Manufacturing Corporation

115 Ricou St. Shreveport, LA USA 71107

T (318) 221-8454 F (318) 222-4106

inferno@infernomfg.com

Drawing No: GA.ASSY-Tubular

Drawing Date: 9/29/2020

Revision: 0

Rev Date:

© 2020 Inferno Mfg Corp

Sheet: 1/1