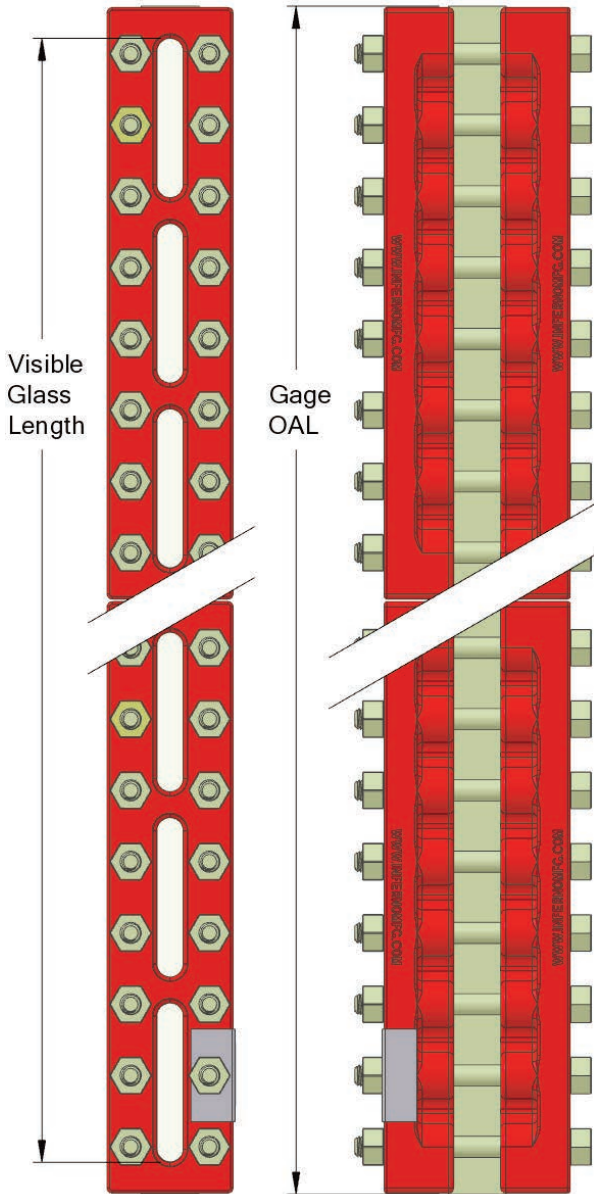


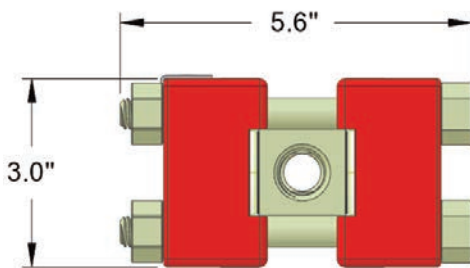
T200 Series Level Gage— See-Thru (Transparent / Plain) Style— H.P. for Liquid-Liquid INTERFACE or Liquid-Vapor applications



| Model No. | Visible Length (In) | Overall Length (In) | Weight (Lbs) |
|-----------|---------------------|---------------------|--------------|
| T200-13 | 5.75 | 7.25 | 17 |
| T200-14 | 6.75 | 8.25 | 19 |
| T200-15 | 7.875 | 9.375 | 21 |
| T200-16 | 9.125 | 10.625 | 24 |
| T200-17 | 10.25 | 11.75 | 27 |
| T200-18 | 11.875 | 13.375 | 30 |
| T200-19 | 12.625 | 14.125 | 32 |
| T200-24 | 15 | 16.5 | 38 |
| T200-25 | 17.25 | 18.75 | 43 |
| T200-26 | 19.75 | 21.25 | 49 |
| T200-27 | 22 | 23.5 | 53 |
| T200-28 | 25.25 | 26.75 | 61 |
| T200-29 | 26.75 | 28.25 | 64 |
| T200-36 | 30.375 | 31.875 | 73 |
| T200-37 | 33.75 | 35.25 | 80 |
| T200-38 | 38.625 | 40.125 | 91 |
| T200-39 | 40.875 | 42.375 | 96 |
| T200-47 | 45.5 | 47 | 107 |
| T200-48 | 52 | 53.5 | 121 |
| T200-49 | 55 | 56.5 | 128 |
| T200-57 | 57.25 | 58.75 | 133 |
| T200-58 | 65.375 | 66.875 | 152 |
| T200-59 | 69.125 | 70.625 | 160 |
| T200-68 | 78.75 | 80.25 | 182 |
| T200-69 | 83.25 | 84.75 | 192 |
| T200-78 | 92.125 | 93.625 | 212 |
| T200-79 | 97.375 | 98.875 | 224 |
| T200-88 | 105.5 | 107 | 243 |
| T200-89 | 111.5 | 113 | 256 |
| T200-98 | 118.875 | 120.375 | 273 |
| T200-99 | 125.625 | 127.125 | 288 |
| T200-108 | 132.25 | 133.75 | 303 |
| T200-109 | 139.75 | 141.25 | 320 |
| T200-118 | 145.625 | 147.125 | 330 |
| T200-119 | 153.875 | 155.375 | 352 |
| T200-128 | 159 | 160.5 | 360 |

| Pressure Ratings, PSI factory hydrotested to 1.3 x | | | | | | |
|---|--------|--------|--------|--------|--------|--|
| Exception: Steam Service limited to 450 WSP (457°F Superheated) with MICA PROTECTION; 250 WSP unprotected | | | | | | |
| 100° F | 200° F | 300° F | 400° F | 500° F | 572° F | |
| 2750 | 2610 | 2480 | 2380 | 2170 | 1870 | |
| 2630 | 2500 | 2360 | 2200 | 2030 | 1780 | |
| 2500 | 2380 | 2230 | 2100 | 1980 | 1700 | |
| 2380 | 2250 | 2130 | 1990 | 1840 | 1610 | |
| 2240 | 2140 | 2000 | 1880 | 1750 | 1540 | |
| 2130 | 2020 | 1890 | 1770 | 1650 | 1430 | |
| 2000 | 1900 | 1780 | 1670 | 1550 | 1350 | |
| 2630 | 2500 | 2360 | 2200 | 2030 | 1780 | |
| 2500 | 2380 | 2230 | 2100 | 1980 | 1700 | |
| 2380 | 2250 | 2130 | 1990 | 1840 | 1610 | |
| 2240 | 2140 | 2000 | 1880 | 1750 | 1540 | |
| 2130 | 2020 | 1890 | 1770 | 1650 | 1430 | |
| 2000 | 1900 | 1780 | 1670 | 1550 | 1350 | |
| 2380 | 2250 | 2130 | 1990 | 1840 | 1610 | |
| 2240 | 2140 | 2000 | 1880 | 1750 | 1540 | |
| 2130 | 2020 | 1890 | 1770 | 1650 | 1430 | |
| 2000 | 1900 | 1780 | 1670 | 1550 | 1350 | |
| 2240 | 2140 | 2000 | 1880 | 1750 | 1540 | |
| 2130 | 2020 | 1890 | 1770 | 1650 | 1430 | |
| 2000 | 1900 | 1780 | 1670 | 1550 | 1350 | |
| 2240 | 2140 | 2000 | 1880 | 1750 | 1540 | |
| 2130 | 2020 | 1890 | 1770 | 1650 | 1430 | |
| 2000 | 1900 | 1780 | 1670 | 1550 | 1350 | |
| 2130 | 2020 | 1890 | 1770 | 1650 | 1430 | |
| 2000 | 1900 | 1780 | 1670 | 1550 | 1350 | |
| 2130 | 2020 | 1890 | 1770 | 1650 | 1430 | |
| 2000 | 1900 | 1780 | 1670 | 1550 | 1350 | |
| 2130 | 2020 | 1890 | 1770 | 1650 | 1430 | |
| 2000 | 1900 | 1780 | 1670 | 1550 | 1350 | |
| 2130 | 2020 | 1890 | 1770 | 1650 | 1430 | |
| 2000 | 1900 | 1780 | 1670 | 1550 | 1350 | |
| 2130 | 2020 | 1890 | 1770 | 1650 | 1430 | |
| 2000 | 1900 | 1780 | 1670 | 1550 | 1350 | |
| 2130 | 2020 | 1890 | 1770 | 1650 | 1430 | |
| 2000 | 1900 | 1780 | 1670 | 1550 | 1350 | |

Maximum continuous operating temperature decreased from 600°F to 572°F based on glass manufacturer's published rating for tempered borosilicate.
Exception: Hot oil / thermal transfer fluid applications with borosilicate glass permitted up to 600°F, limited to 145 PSI max.



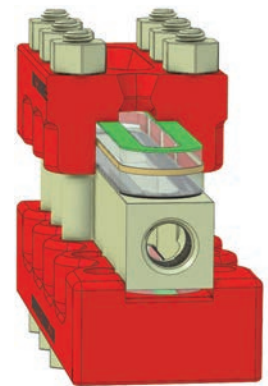
End Connections

- 1/2" F-NPT standard
- 3/4" F-NPT optional

Materials of Construction:

See [M191980](#) for popular options

- Tempered borosilicate glass, Maxos® brand
- Gage body (wetted) per NACE
- Cover flanges, powder coated steel (standard) or stainless
- B7 bolting, zinc plated (standard)
- B7M, de-rate 20%
- B8M Class 2, de-rate 15%
- Flexible graphite seal / compressed fiber cushion
- Cross ties for added strength, undercut permits "behind-the-bar" vision for complete view, design validated by FEA
- Gage support for long / heavy gages (either factory-welded brackets or lift-from-below angle plate)
- Large thru-bore (0.59 Ø) between sections allows brush access for cleaning



Drawing T200

Revision E Rev Date: 5/17/2022

Created: 7/30/2007